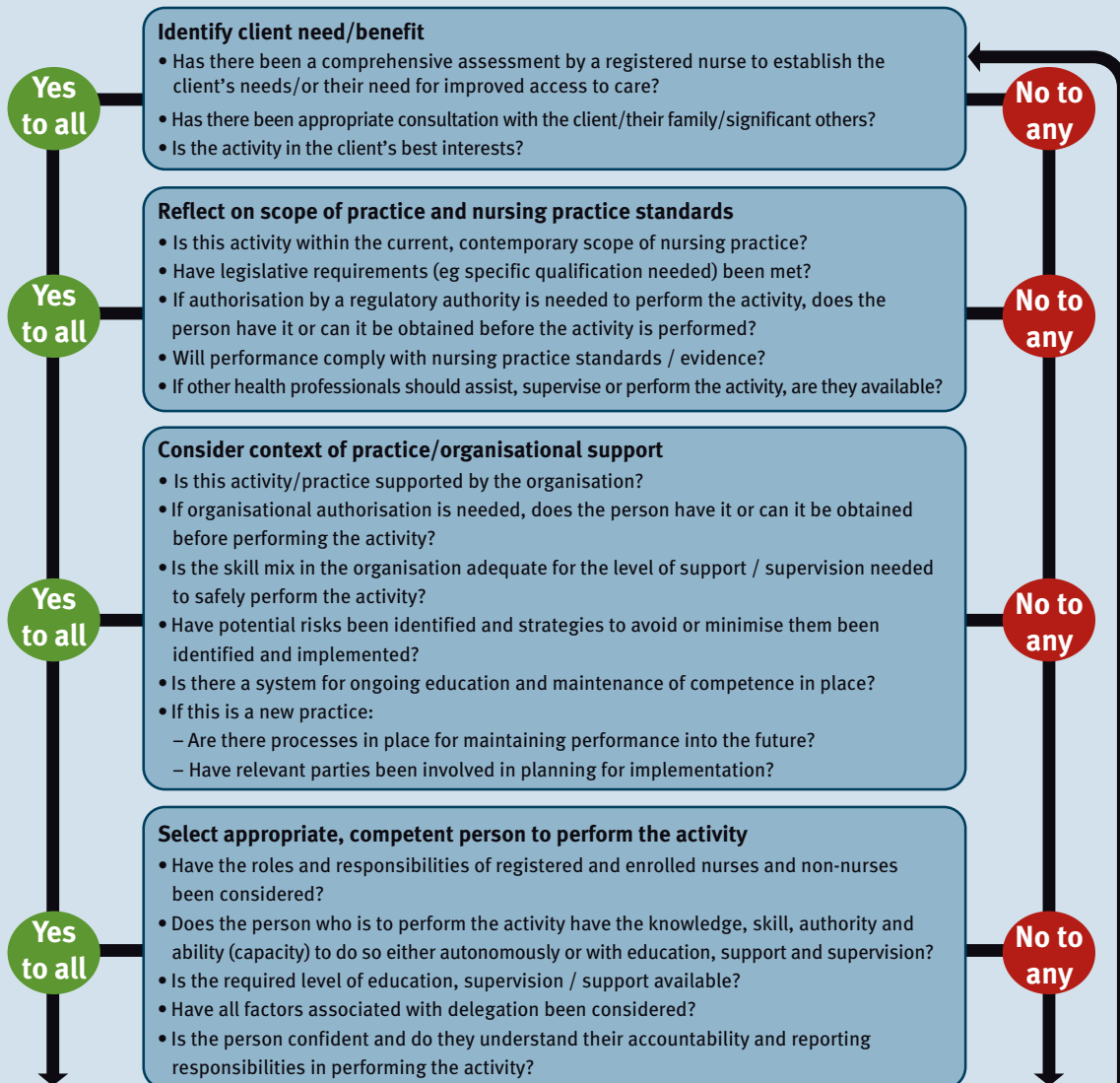


# NURSING PRACTICE DECISIONS SUMMARY GUIDE

[NOTE: the order in which these issues are considered may vary according to context]



**YES TO ALL**

**NO TO ANY**

**ACTION**

Proceed to:

- perform the activity *OR*
- delegate to a competent person
- document the decision and the actions

**ACTION**

- Consult/seek advice (eg NUM, DON other health professional) *OR*
- Refer/collaborate *OR*
- Plan to enable integration/practice change if appropriate (including developing/implementing policies, gaining qualifications as needed)

**EVALUATE**

Document and evaluate and, if change still desired, commence process again

# CONTEXT